

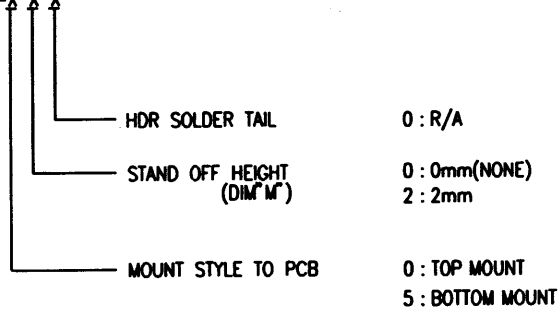
PRODUCT NO.

92790

REVISIONS				
REV	DESCRIPTION	ECN	BY	DATE
A	RELEASED	130018	N.T.	11/19/93
B	REVISED	J50085	M.K	6/14/95

PRODUCT NO. *92790-XXX	STAND OFF DIM "M"(mm)	LONG HDR (UPPER DECK)			LONG HDR (LOWER DECK)			HDR COLOR	SHEET NO.	MOUNTING STYLE TO PCB
		HDR+GUIDE 92794-XXX	GUIDE 92791-XXX	HDR 92140-XXX	HDR+GUIDE 92789-XXX	GUIDE 92791-XXX	HDR 92140-XXX			
000	0	000	001	005	000	001	000	BLACK	NO.2	
020	2	020	001	045	020	021	040	BLACK	NO.3	
500	0	500	001	505	500	001	500	NATURAL	NO.4	
520	2	520	001	545	520	021	540	NATURAL	NO.5	

*92790-XXX



DF-003A REV C

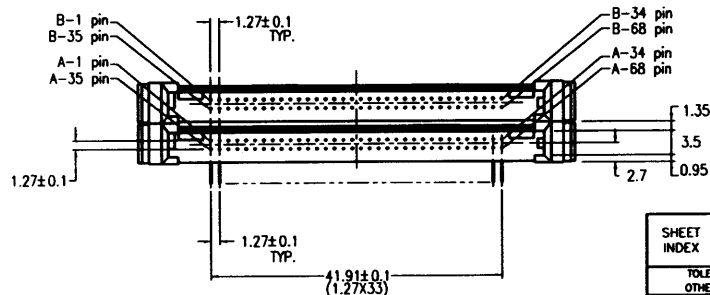
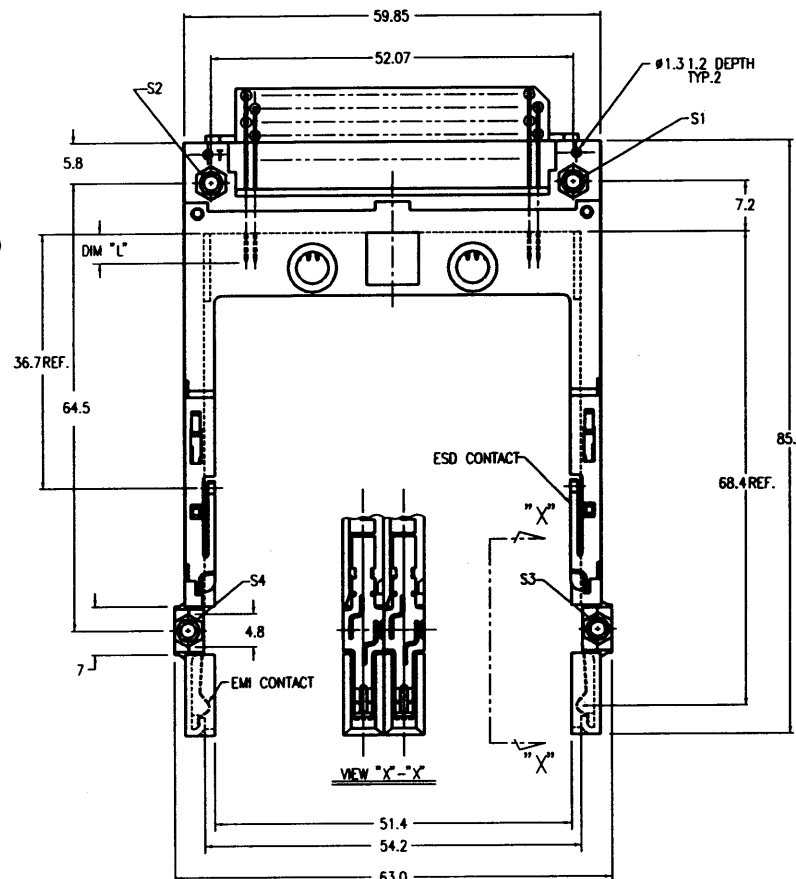
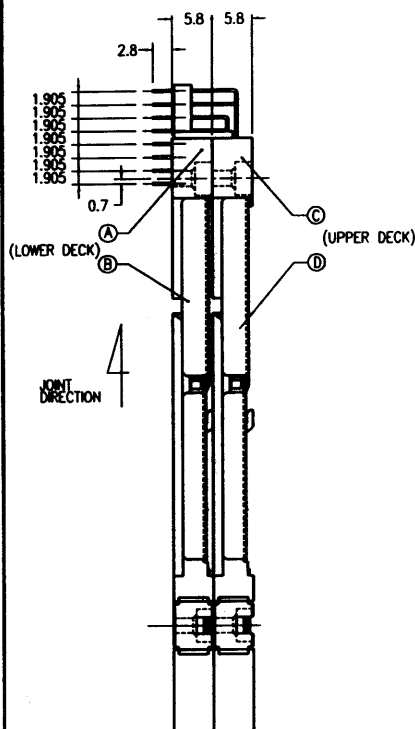
DO NOT SCALE PRINT THIS INFORMATION IS CONFIDENTIAL AND IS OBSOLETE TO YOU ON CONDITION THAT NO FURTHER DISCLOSURE IS MADE BY YOU TO OTHER THAN BERG PERSONNEL WITHOUT WRITTEN AUTHORIZATION FROM BERG ELECTRONICS JAPAN K.K.

SHEET INDEX	ISSUE	B	B	B	B							
	SH NO.	1	2	3	4	5						
TOLERANCES UNLESS OTHERWISE SPECIFIED		MATERIAL		DR	DATE		CUSTOMER COPY					
LINEAR			FINISH	ENGR		4/17/95	3					
ANGLES			APP	CHK		5/10/95	4					
				UNIT		5/11/95	5					
TITLE								SCALE	SIZE	DATE NO.	REV	SHEET
BERG ELECTRONICS								-#	C	92790	B	1 of 5
68P DOUBLE LONG HEADER FOR TYPE I/II/III (WITH EMI CLIP)												

PRODUCT NO.

92790-000

REVISIONS				
REV	DESCRIPTION	ECN	BY	DATE
A	RELEASED	J30018	M.T.	1/19/93
B	REVISED	J50085	M.K.	1/17/95



NOTE

1. ASSY PROCESS

- 1.1 TO MOUNT PART ②, ③ ON PWB WITH SCREW (S1,S2) AND SOLDER.
- 1.2 TO JOINT PART ②, ③ INTO PART ①, ④ THEN FIX PART ②, ③ WITH 2 SCREWS(S3,S4).

② MATERIAL

- 2.1 PART ②, ③ (HEADER ASSY)
 PLASTIC : HOUSING LCP UL94V-0 BLACK
 : LOCATOR G.F.6/6 NYLON UL94V-0 BLACK
 PIN : PHOSPHOR BRONZE

- 2.2 PART ①, ④ (GUIDE ASSY)
 PLASTIC : GUIDE POLYPHTHARAMID UL94V-0 BLACK
 PLATE : STAINLESS
 EMI CONTACT : PHOSPHOR BRONZE

③ FINISH(PIN)

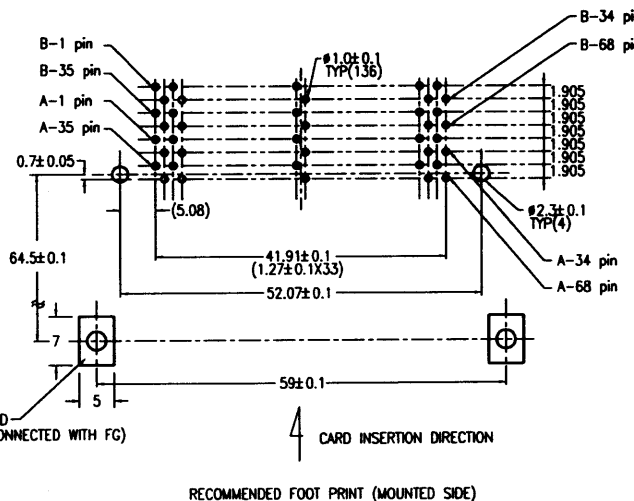
- UNDER PLATING : 0.5 μm MIN. Ni
- CONTACT AREA : 0.1 μm MIN. Au OVER 0.5 μm MIN. Pd-Ni
- SOLDER TAIL : 2.5 μm MIN. Sn-Pb

4. DIM "L"

4.25±0.1	3.5±0.1	5.0±0.1
OTHERS	36.67	44.5

5. GENERAL TOLERANCE : ±0.3

6. SEE SHEET 1 REGARDING COMPONENTS.



RECOMMENDED FOOT PRINT (MOUNTED SIDE)

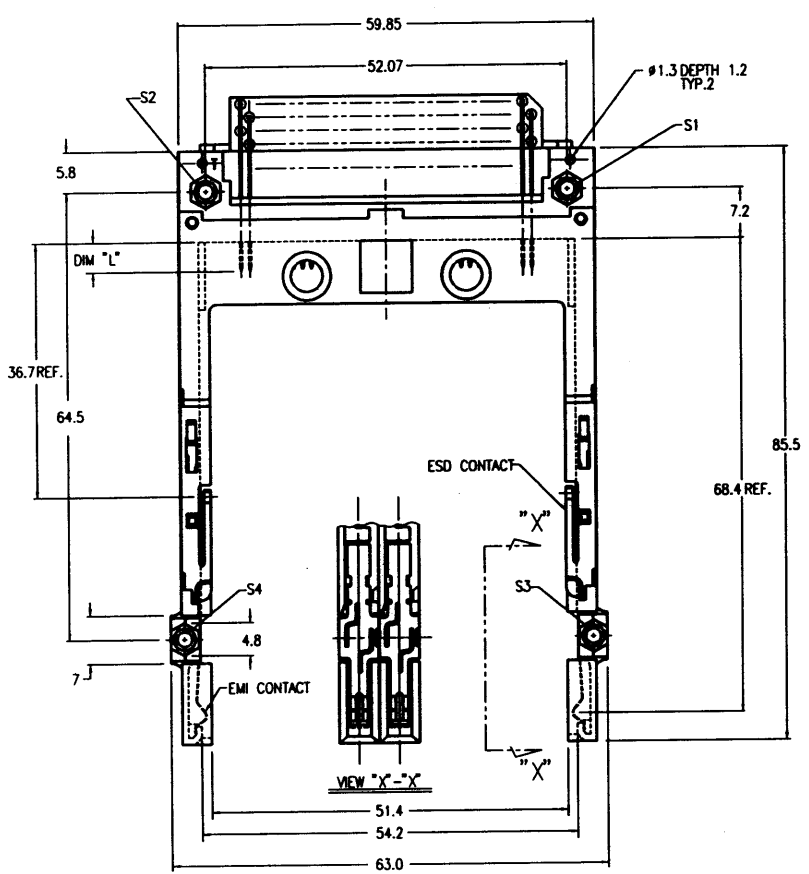
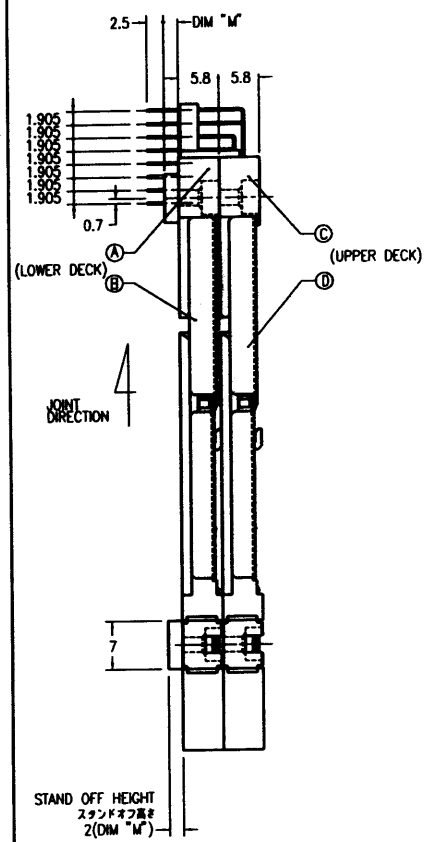
SHEET INDEX	ISSUE	SH NO.	MAT	DR	DATE	CUSTOMER	TITLE	SCALE	SIZE	DRWG. NO.	REV	SHEET
				J. Omada	4/17/95		68P DOUBLE LONG HEADER FOR TYPE I/II/III (WITH EMI CLIP)	2/1	C	92790	B	2of
TOLERANCES UNLESS OTHERWISE SPECIFIED		SEE NOTE ②		ENGR	4/17/95	COPY						
LINEAR		FINISH		CHK	1/18/95	DRWG. ANGLE PROJ						
ANGLES		SEE NOTE ③		APPROV	5/18/95	UNIT						



DF-003A REV C DO NOT SCALE PRINT THIS INFORMATION IS CONFIDENTIAL AND IS OBSOLETE TO YOU ON CONDITION THAT NO FURTHER DISCLOSURE IS MADE BY YOU TO OTHER THAN BERG PERSONNEL WITHOUT WRITTEN AUTHORIZATION FROM BERG ELECTRONICS JAPAN INC.

REVISIONS				
REV	DESCRIPTION	ECN	BY	DATE
A	RELEASED	J30018 N.1	1/16/73	
B	REVISED	J50085 M.K	4/17/76	

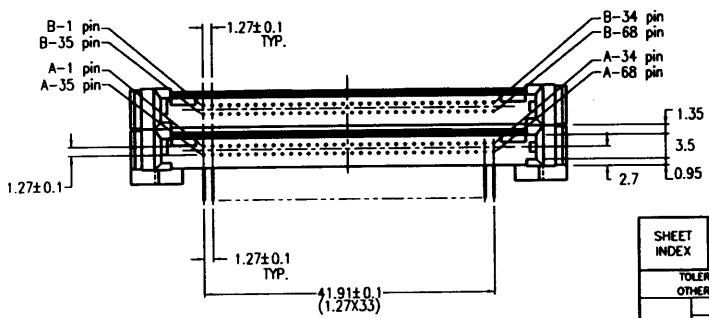
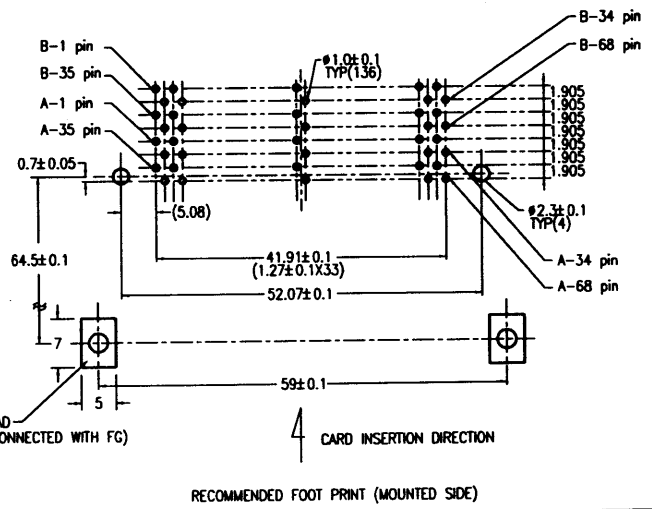
PRODUCT NO.
92790-020



NOTE

- ASSY PROCESS
 - TO MOUNT PART ①, ② ON PWB WITH SCREW (S1,S2) AND SOLDER.
 - TO JOINT PART ③, ④ INTO PART ①, ② THEN FIX PART ③, ④ WITH 2 SCREWS(S3,S4).
- MATERIAL
 - PART ①, ② (HEADER ASSY)
 - PLASTIC : HOUSING LCP UL94V-0 BLACK
 - LOCATOR G.F.6/6 NYLON UL94V-0 BLACK
 - PIN : PHOSPHOR BRONZE
 - PART ③, ④ (GUIDE ASSY)
 - PLASTIC : GUIDE POLYPHTHARAMID UL94V-0 BLACK
 - PLATE : STAINLESS
 - EMI CONTACT : PHOSPHOR BRONZE
- FINISH(PIN)
 - UNDER PLATING : 0.5 μm MIN. Ni
 - CONTACT AREA : 0.1 μm MIN. Au OVER 0.5 μm MIN. Pd-Ni
 - SOLDER TAIL : 2.5 μm MIN. Sn-Pb
- DIM "L"

4.25±0.1	3.5±0.1	5.0±0.1
OTHERS	36.67	35.0μm
- GENERAL TOLERANCE : ±0.3
- SEE SHEET 1 REGARDING COMPONENTS.



STAND OFF HEIGHT
スタンドオフ高さ
2(DIM "M")

SHEET INDEX	ISSUE	SH NO.	MAT	DR	DATE	CUSTOMER COPY	TITLE	SCALE	SIZE	DATE NO.	REV	SHEET
				S. Okada	4/17/76		68P DOUBLE LONG HEADER FOR TYPE 1/II/III (WITH EMI CLIP)	2/1	C	92790	B	3of
	TOLERANCES UNLESS OTHERWISE SPECIFIED		SEE NOTE ②	ENGR M. Kojima	4/17/76							
	LINEAR		FINISH	CHK H. Nishida	4/18/76							
	ANGLES		SEE NOTE ①	TPPR K. Sugiura	4/18/76							

DF-003A REV. C

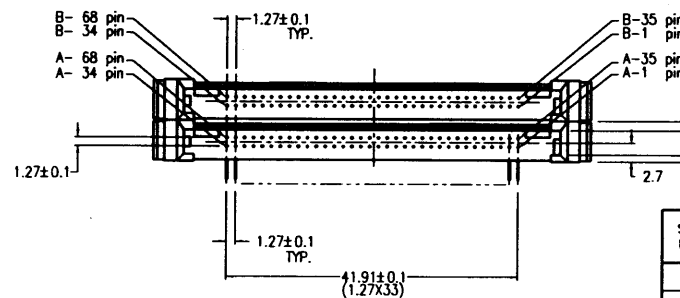
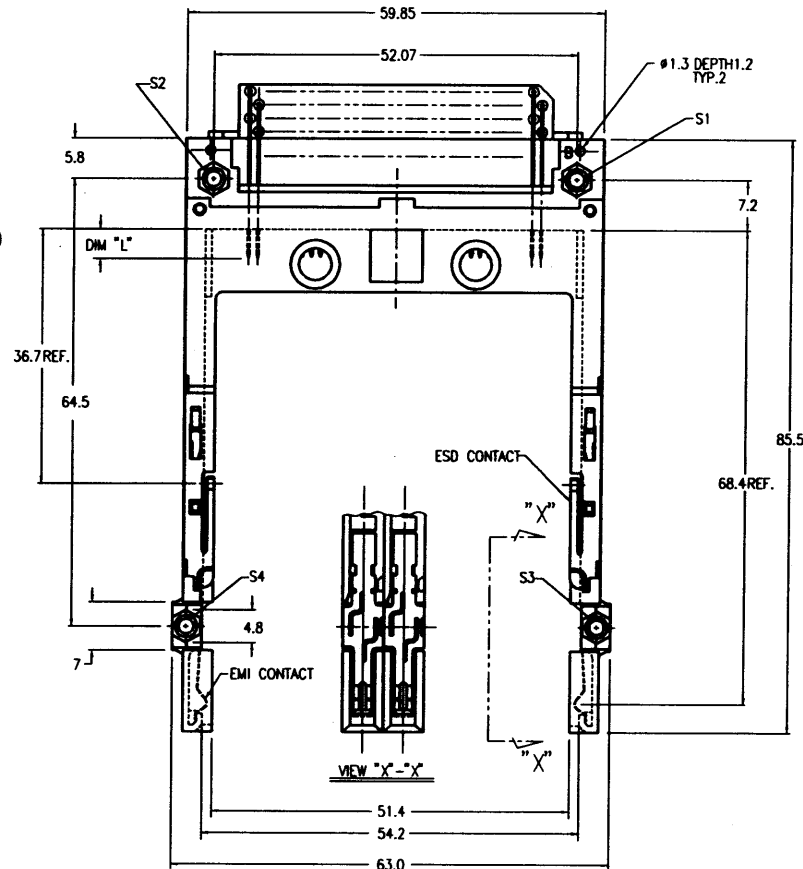
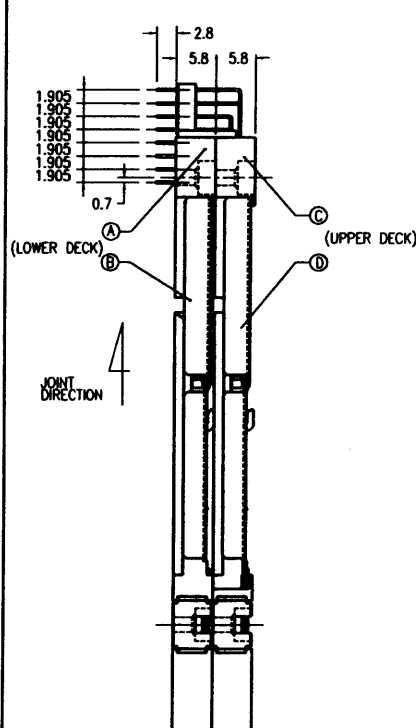
DO NOT SCALE PRINT THIS INFORMATION IS CONFIDENTIAL AND IS DISCLOSED TO YOU ON CONDITION THAT NO FURTHER DISCLOSURE IS MADE BY YOU TO OTHER THAN BERG PERSONNEL WITHOUT WRITTEN AUTHORIZATION FROM BERG ELECTRONICS JAPAN K.K.

PRODUCT NO.

92790-500

REVISIONS

REV	DESCRIPTION	ECN	BY	DATE
A	RELEASED	J30018.N.T		1/19/95
B	REVISED	U50085.M.K		4/17/95



NOTE

1. ASSY PROCESS

- 1.1 TO MOUNT PART (A), (C), ON PWB WITH SCREW (S1,S2) AND SOLDER.
- 1.2 TO JOINT PART (B), (D) INTO PART (A), (C) THEN FIX PART (B), (D) WITH 2 SCREWS(S3,S4).

(2) MATERIAL

- 2.1 PART (A), (C) (HEADER ASSY)
 PLASTIC : HOUSING LCP UL94V-0 NATURAL
 : LOCATOR G.F.6/6 NYLON UL94V-0 BLACK
 PIN : PHOSPHOR BRONZE

- 2.2 PART (B), (D) (GUIDE ASSY)
 PLASTIC : GUIDE POLYPHTHARAMID UL94V-0 BLACK
 PLATE : STAINLESS
 EMI CONTACT : PHOSPHOR BRONZE

(3) FINISH(PIN)

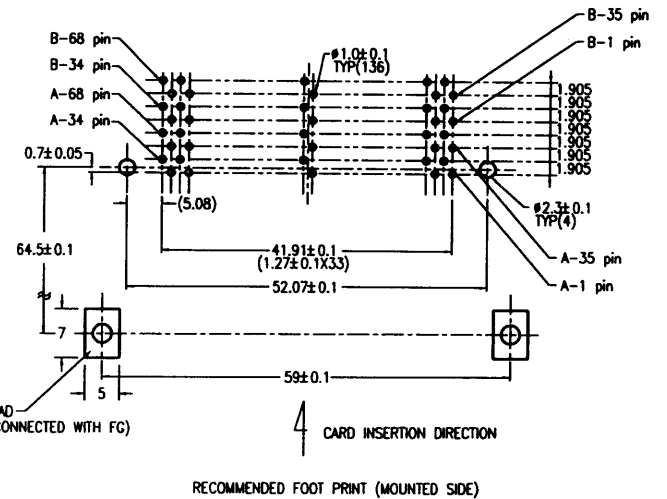
- UNDER PLATING : 0.5 μm MIN.Ni
- CONTACT AREA : 0.1 μm MIN. Au OVER 0.5 μm MIN. Pd-Ni
- SOLDER TAIL : 2.5 μm MIN. Sn-Pb

4. DIM "L"

4.25±0.1	3.5±0.1	5.0±0.1
OTHERS	36.67	35.0μm

5. GENERAL TOLERANCE : ±0.3

6. SEE SHEET 1 REGARDING COMPONENTS.



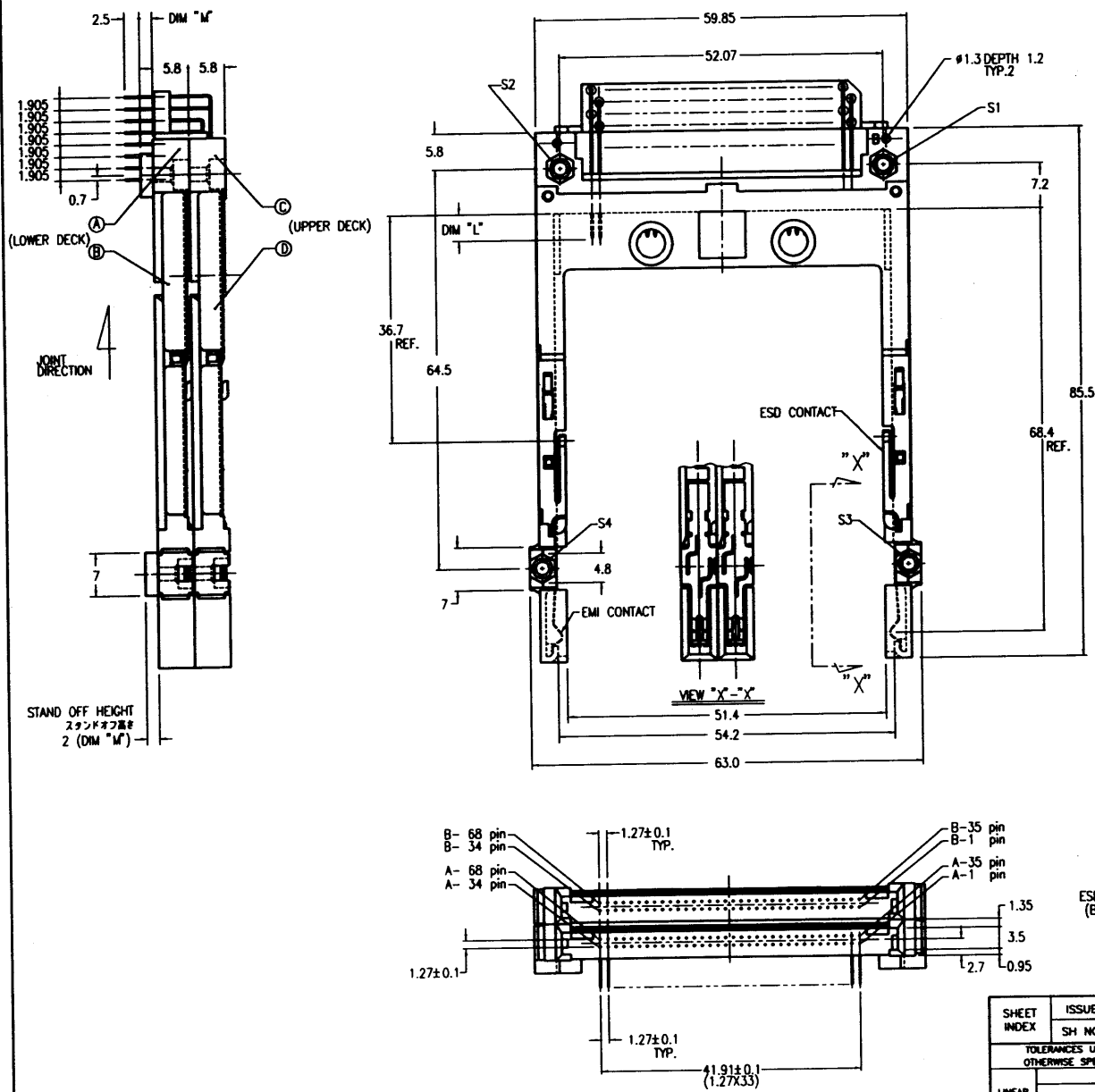
07-003A REV C

DO NOT SCALE PRINT THIS INFORMATION IS CONFIDENTIAL AND IS DISCLOSED TO YOU ON CONDITION THAT NO FURTHER DISCLOSURE IS MADE BY YOU TO OTHER THAN BERG PERSONNEL WITHOUT WRITTEN AUTHORIZATION FROM BERG ELECTRONICS JAPAN K.K.

SHEET INDEX	ISSUE SH NO.	MAT	DR	DATE	CUSTOMER COPY	TITLE	SCALE	SIZE	DWG. NO.	REV	SHEET
		SEE NOTE (2)	J. Omachi	4/17/95		68P DOUBLE LONG HEADER FOR TYPE I/II/III (WITH EMI CLIP)	2/1	C	92790	B	4 of
LINEAR			CHK	5/18/95							
ANGLES		SEE NOTE (3)	APPV	5/18/95							

REVISIONS			
REV	DESCRIPTION	ECN	BY DATE
A	RELEASED	130018	N.T. 1/19/93
B	REVISED	150085	M.K. 4/17/95

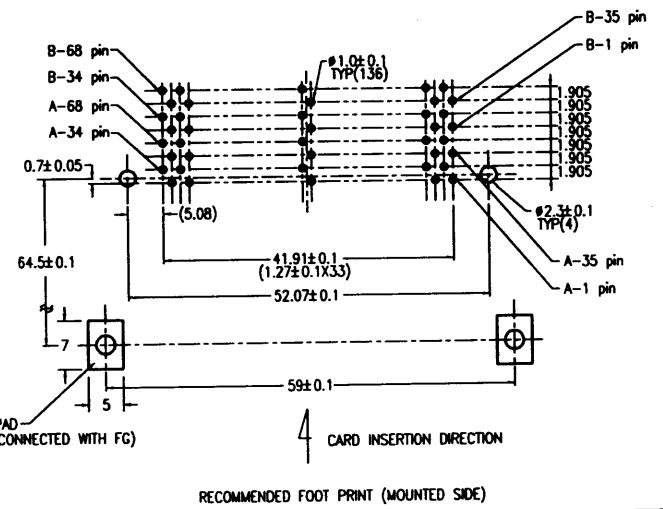
PRODUCT NO.
92790-520



NOTE

- ASSY PROCESS
 - TO MOUNT PART ①, ② ON PWB WITH SCREW (S1,S2) AND SOLDER.
 - TO JOINT PART ③, ④ INTO PART ①, ② THEN FIX PART ③, ④ WITH 2 SCREWS(S3,S4).
- MATERIAL
 - PART ①, ② (HEADER ASSY)
 - PLASTIC : HOUSING LCP UL94V-0 NATURAL
 - LOCATOR C.F.6/6 NYLON UL94V-0 BLACK
 - PIN : PHOSPHOR BRONZE
 - PART ③, ④ (GUIDE ASSY)
 - PLASTIC : GUIDE POLYPHTHARAMID UL94V-0 BLACK
 - PLATE : STAINLESS
 - EMI CONTACT : PHOSPHOR BRONZE
- FINISH(PIN)
 - UNDER PLATING : 0.5 μm MIN. Ni
 - CONTACT AREA : 0.1 μm MIN. Au OVER 0.5 μm MIN. Pd-Ni
 - SOLDER TAIL : 2.5 μm MIN. Sn-Pb
- DIM "L"

4.25±0.1	3.5±0.1	5.0±0.1
OTHERS	36.67	±0.1mm
- GENERAL TOLERANCE : ±0.3
- SEE SHEET 1 REGARDING COMPONENTS.



STAND OFF HEIGHT
スタンドオフ高さ
2 (DIM "M")

SHEET INDEX	ISSUE SH. NO.	DRAWN			DATE	CUSTOMER COPY	TITLE	SCALE	SIZE	DWG. NO.	REV	SHEET
		DR	ENGR	CHK								
		J. Okada			4/17/95		68P DOUBLE LONG HEADER FOR TYPE 1/II/III (WITH EMI CLIP)	2/1	C	92790	B	5 of 8
		M. Higashimura			4/17/95							
					4/18/95							
					5/10/95							

DF-003A REV C
DO NOT SCALE PRINT THIS INFORMATION IS CONFIDENTIAL AND IS DISCLOSED TO YOU ON CONDITION THAT NO FURTHER DISCLOSURE IS MADE BY YOU TO OTHER THAN BERG PERSONNEL, WITHOUT WRITTEN AUTHORIZATION FROM BERG ELECTRONICS JAPAN K.K.